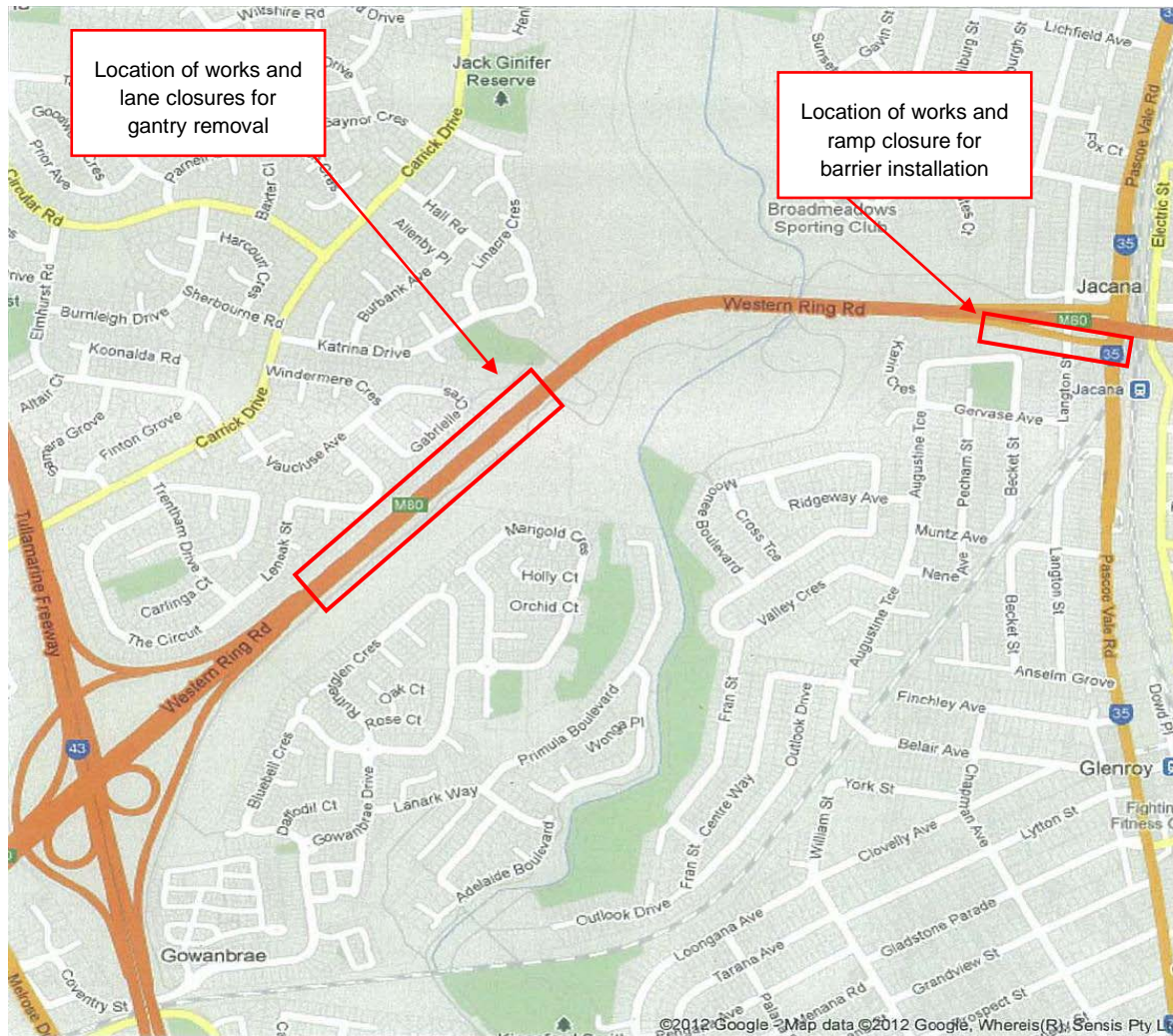


DETAILS	
<b>DATE(S) and TIME</b>	Monday 13 – Sunday 19 February, various times see below
<b>DIRECTION / LOCATION</b>	M80 Ring Road / Sydney Road interchange (Melway ref: Map 7 G11) M80 Ring Road Altona bound - Sydney Road to Tullamarine Freeway (Melway ref: Map 7, G11 and Map 16, A2)
<b>ANTICIPATED DELAYS</b>	Minor delays expected. Allow extra travel time for the detour.
<b>TRAFFIC MANAGEMENT MEASURES</b>	<p><b>Monday 13 – Tuesday 14 February</b></p> <ul style="list-style-type: none"> <li>• <b>10.30pm – 5am:</b> M80 Altona bound CLOSED under Sydney Road bridge</li> </ul> <p><i>Wednesday 15 to Thursday 16 February, M80 Ring Road Altona bound closures are contingency only in case works are delayed</i></p> <p><b>Friday 17 February</b></p> <ul style="list-style-type: none"> <li>• <b>8pm – 8.30am:</b> M80 Altona bound CLOSED under Sydney Road bridge</li> </ul> <p><b>Saturday 18 February</b></p> <ul style="list-style-type: none"> <li>• <b>7.30pm - 9.30am:</b> M80 Altona bound CLOSED under Sydney Road bridge</li> <li>• <b>8.30pm – 5am:</b> Entry ramp CLOSED from Pascoe Vale Road to M80 Altona bound</li> </ul> <p><b>Sunday 19 February,</b></p> <ul style="list-style-type: none"> <li>• <b>12am – 2am: M80 Altona bound CLOSED between Sydney Road and Tullamarine Freeway</b></li> <li>• <b>7.30pm – 5am:</b> M80 Altona bound full closure under Sydney Road bridge</li> </ul> <p>Advanced notice with Variable Message Signs (VMS). Signed detours will be in place. See attached detour maps. Various lane closures associated with these works will also be in place The works will be rescheduled to the next available night in the event of bad weather.</p> <p><b>NOTE: Given the nature of the works, access for emergency services will be restricted during closures. An alternative route may need to be taken to avoid delays.</b></p>
<b>WORK DESCRIPTION</b>	<ul style="list-style-type: none"> <li>• Removal of the south west corner of the Sydney Road bridge over the M80 Ring Road</li> <li>• Removal of overhead signage gantry</li> <li>• Barrier installation</li> </ul>
<b>FURTHER INFORMATION / CONTACTS</b>	<p><b>M80 Project Inquiry line:</b> 1300 297 090  <b>Email:</b> <a href="mailto:community@tullasydney.com.au">community@tullasydney.com.au</a>  <b>Website:</b> <a href="http://vicroads.vic.gov.au/M80Upgrade">vicroads.vic.gov.au/M80Upgrade</a></p>

# Work Alert



# Work Alert



- Pictured above is the detour for the M80 Altona bound closure highlighted in **orange**
- Traffic detoured via exit ramp and then back onto the entry ramp from Sydney Road
- Signed detours will be in place on the night



*Detour map – M80 Ring Road Altona bound closed between Sydney Road and Tullamarine Freeway and entry ramp closed from Pascoe Vale Road to M80 Altona bound*

## M80 Ring Road closed Altona bound between Sydney Road and Tullamarine Freeway

 Freeway / Ramp Closed

 To continue M80 Ring Road Altona bound

- Exit at the Sydney Road exit ramp
- Right to Sydney Road
- Left to Camp Road
- Continue straight to Johnstone St / Broadmeadows Road
- Left to Mickleham Road
- Left to Tullamarine Freeway city bound
- Left on to the entry ramp to continue M80 Ring Road Altona bound

**From Sydney Road**

- Turn to Camp Road
- Continue with detour route above

**From Pascoe Vale Road**

- Turn in to Johnstone Street / Broadmeadows Road
- Continue with detour route above

